

**REVISITING RELEASE, RE-ENTRY,  
(RE)INTEGRATION, AND RECIDIVISM:**

**EXPLORING THE ROLE OF  
COMMUNITY-BASED  
ORGANIZATIONS & THE  
COMMUNITY  
CORRECTIONS  
SECTOR**

Sept. 20, 2022

Danielle Kouri

St. Leonard's Society of Canada



# **OVERVIEW**

- **Terminology**
- **Brief History of St. Leonard's Society of Canada & the Community Corrections Sector**
- **Research Overview: Impact of COVID-19 on CBRFs**
- **Supporting Life-Sentenced People**
- **Questions**

# TERMINOLOGY

- **Community-based / NGO** (non-government organizations) / **Voluntary Sector**
  - Registered charities, Not-for-Profits
- **CBRF / CRF** (community-based residential facilities, or halfway house)
- **SLSC = St. Leonard's Society of Canada**
- **Person-centered language**
- **Lifers = People serving a life sentence**
- **Community Corrections**
- **Canadian criminal justice system**
- **Integration vs. Reintegration**
- **Habilitation vs. Rehabilitation**

# INTRODUCTION TO SLSC

Founded in 1967

**Mission:** To provide a humane and informed justice policy and responsible leadership to foster safe communities.

**Main Activities:**

- **Endorsing evidence-based approaches** to criminal and social justice;
- Conducting **research** and developing **policy**;
- **Supporting member affiliates**; and,
- Advancing **collaborative relationships** and **communication** among individuals and organizations dedicated to social justice.



# ROOTS OF THE HALFWAY HOUSE MOVEMENT IN CANADA: ST. LEONARD'S HOUSE



...would you do it if you'd been in prison for 10, and they turned you out with 10 bucks on hand? It gets straight in a hole and a woman and half a man?"

...the way for a moment to talk?"

...the way Ben, Neil Liddy talks, and he's not to be sure. He says St. Leonard's House is a "halfway" house, that tries to help released felons bridge the gap between prison and the world.

...men what must do when they come out of prison. You find a white, and it takes the no you're get hit. Now you're broke. You can't get organized, but you're get some help in Toronto, you find for Charles and Frank's house to find an old friend. It's a block, it's get it. It's get the truck, a truck get drunk. Two hours are better than nothing. You're out, it's get drunk, you come around for what happens. Plenty men look where you started."

...the another claim that Father Liddy is trying to do, let's see, let's see, as they come. It's not hard to see. He wears a suit and a little purple in, short black hair and his black suit, his broad smile and his clerical collar, he looks like a shining star in Ontario for the St. Leonard's House.

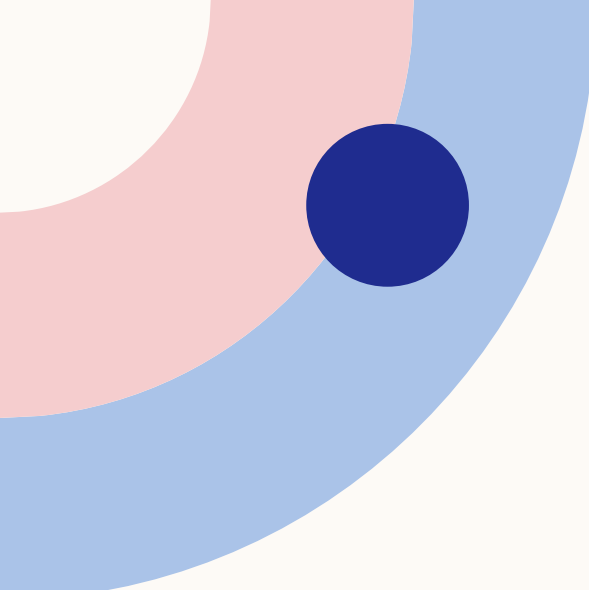


# COMMUNITY-BASED RESIDENTIAL FACILITIES (CBRFs): SLSC AFFILIATE AGENCIES



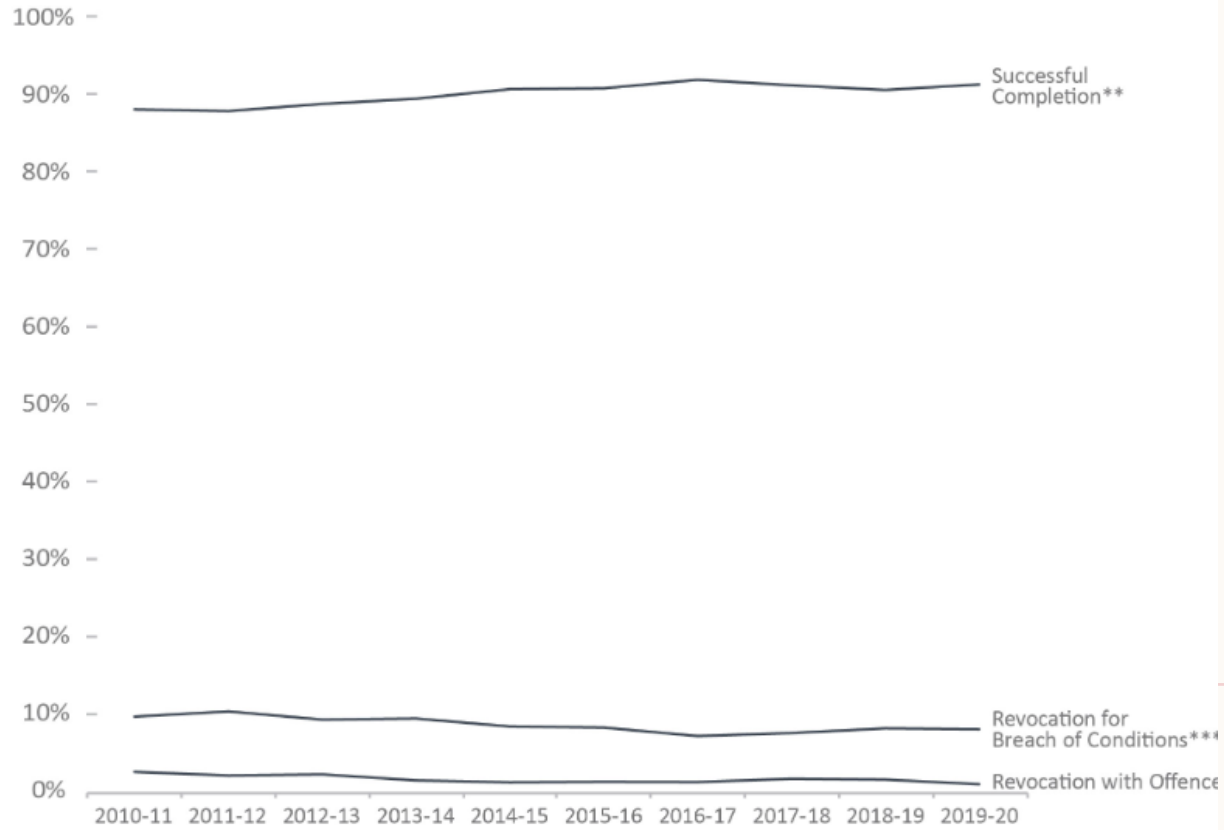
**“The transition can only be made safely and successfully in a community where acceptance is possible.”**  
– Kenneth Bolton (1982)

# COMMUNITY CORRECTIONS



The successful completion rate of federal day parole supervision periods has remained stable

Figure D8 : Day parole outcomes – 10-year trend



► Image description

Figure D8 Notes:

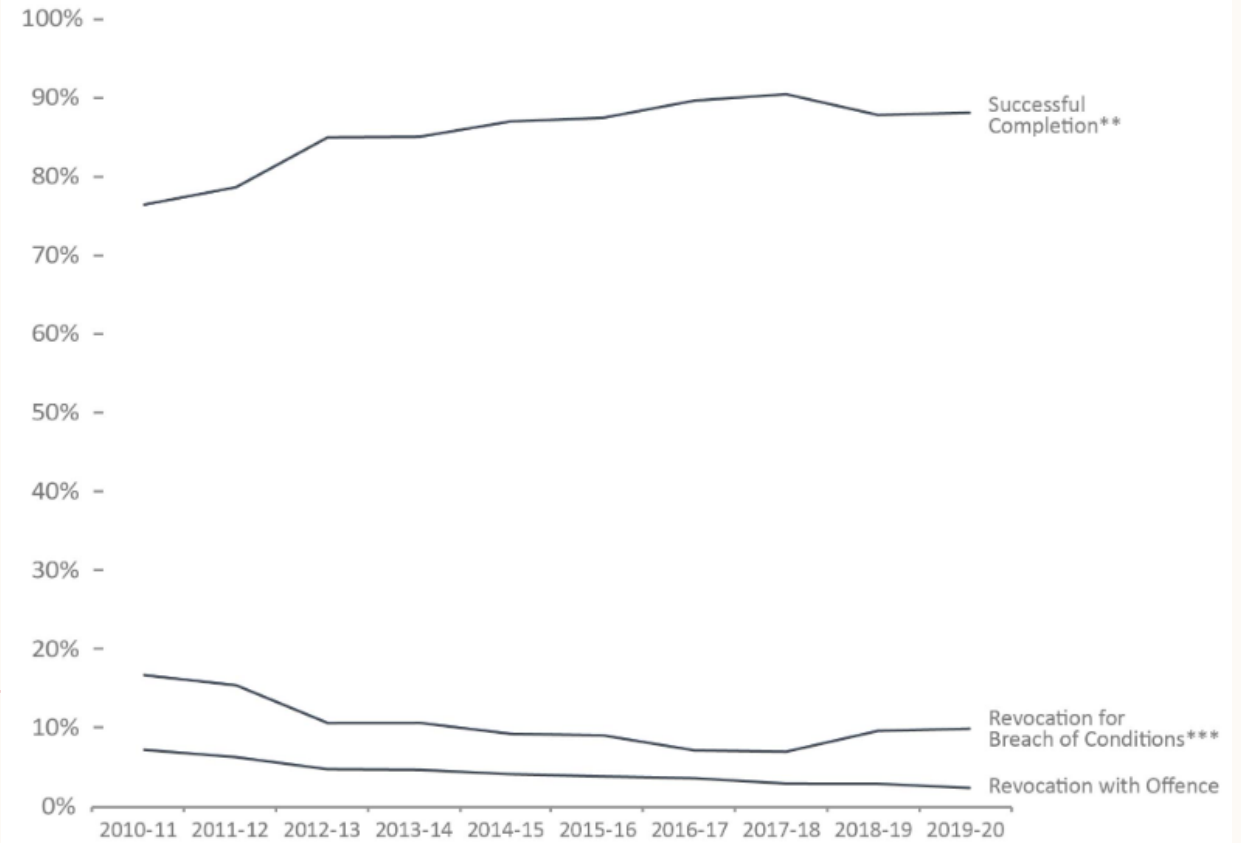
Source: Parole Board of Canada.

- In the last 10 years, the successful completion rate of federal day parole supervision periods has been over 85.0%.

# DAY PAROLE

The successful completion rate of federal full parole supervision periods has remained stable

Figure D9: Full parole outcomes – 10-year trend



► Image description

Figure D9 Notes:

Source: Parole Board of Canada.

- In 2019-20, the successful completion rate of federal full parole supervision periods for offenders serving determinate sentences remained stable (88.0%; +0.3%) compared to 2018-19.

# FULL PAROLE

# COMMUNITY CORRECTIONS

**“Crime is a community problem, and demands community solutions”**

- Skip Graham, former  
Exec. Dir. St.  
Leonard's House  
Windsor (2012)

- Integration and habilitation of federally sentenced people in community-based settings, i.e.:
  - Targeting root causes of criminal behaviour
  - Prevention (i.e. tertiary) through interventions that meet unique needs
  - Supporting safe communities
  - Public education and social action
- Rooted in evidence-based practice and informed by lived experience
  - Graduated release as a best practice



**RESEARCH  
OVERVIEW:**

**THE IMPACT OF  
COVID-19 ON CBRFS**

**2020-21**

## INFRASTRUCTURE, INTERSECTIONS, AND INNOVATION:

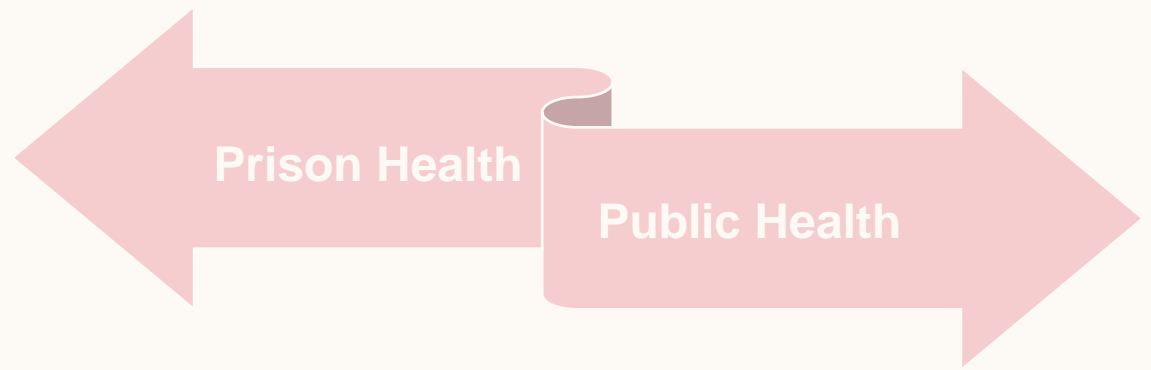
Understanding Community-based  
Residential Facilities Within a  
Shifting COVID-19 Landscape

## General Objectives:

- identify and support innovative CBRFs practices
- inform how CBRF operators can safely continue essential service and program delivery during a health crisis

## Activities:

1. Access local needs
2. Implement & evaluate innovations
3. Exchange knowledge



# LESSONS LEARNED

12

- 1. The nature and quality of relationships among stakeholders are integral to producing effective policies and practices, particularly within the context of a wide-spread health crisis.*
- 2. The needs of the community corrections sector require more comprehensive representation and inclusion in crisis responses.*
- 3. Supporting the continuity of care within the prison health to public health spectrum and reducing barriers to integration are integral to improving integration outcomes for people who have been in conflict with the law.*
- 4. Invest in community-based organizations and alternatives to incarceration to enhance the community corrections sector's capacity for service delivery and overall stability.*
- 5. The mental health and wellbeing of people are important aspects of crisis responses.*



**SUPPORTING  
PEOPLE WITH  
LIFE SENTENCES**

# STATISTICAL OVERVIEW: LIFE-SENTENCED PEOPLE IN CANADA

Offenders with life and/or indeterminate sentences represented 25% of the CSC total offender population

Figure C14: Sentence imposed for the total offender population (2019-20)



**Life and/or indeterminate sentences 25.0%**

Life 22.0%

Indeterminate 2.8%

Life and indeterminate 0.1%

**Determinate sentences 75.0%**

## Canada supreme court rules life without chance of parole is 'cruel' and illegal

Decision setting parole eligibility at 25 years could give hope to at least 18 mass killers serving multiple life sentences



Table C14: Total offender population (2019-20)

	Total Offender Population		In Custody in a CSC Facility		In Community Under Supervision		
	#	%	Incarcerated	Day Parole	Full Parole	Other	
<b>Offenders with a life sentence for:</b>							
1st Degree Murder	1,293	5.6	1,010	69	214	0	
2nd Degree Murder	3,604	15.6	1,920	235	1,449	0	
Other Offences	190	0.8	102	12	76	0	
<b>Total</b>	<b>5,087</b>	<b>22.0</b>	<b>3,032</b>	<b>316</b>	<b>1,739</b>	<b>0</b>	

# SUPPORTING PEOPLE WITH LIFE SENTENCES: IDENTIFYING THE NEED & STRATEGY

1976

- Abolishment of capital punishment
- Increasing number of people with indeterminate & life sentences

1982

- SLHW began formalizing concern for welfare of lifers and increasing prevalence in prisons

1990

- LifeLine Project founded

1991-1992

- The first In-Reach Workers began providing services



# SUPPORTING PEOPLE WITH LIFE SENTENCES: ENHANCING & EXPANDING SERVICE DELIVERY

2005-2010

- 2012

- Development of the *Lifer Resource Strategy (LRS)* for men, women, and Indigenous Peoples, English & French

- Internationally recognized, awarded



Life  
Line



# SUPPORTING PEOPLE WITH LIFE SENTENCES: 17

## KEEPING THE 'LIFE' OF LIFELINE

2012

2012

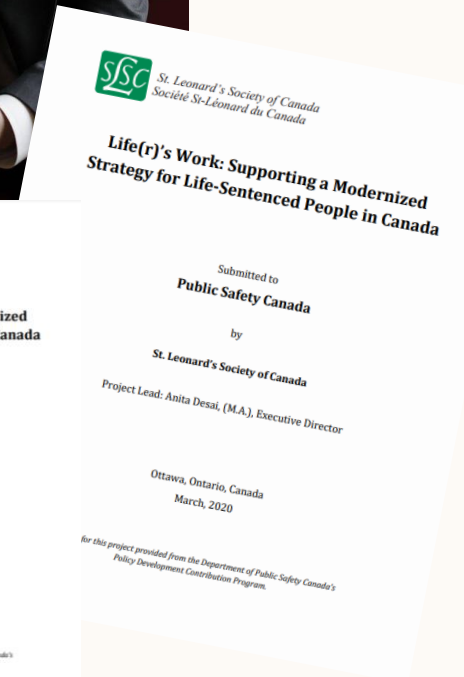
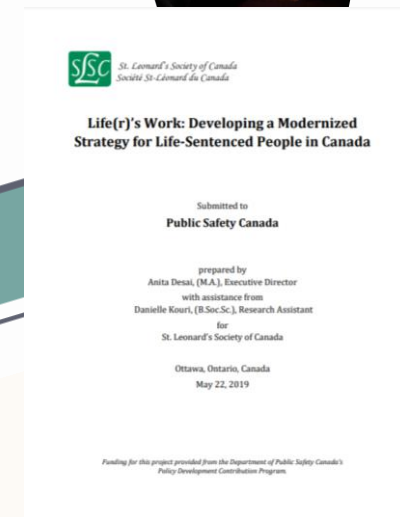
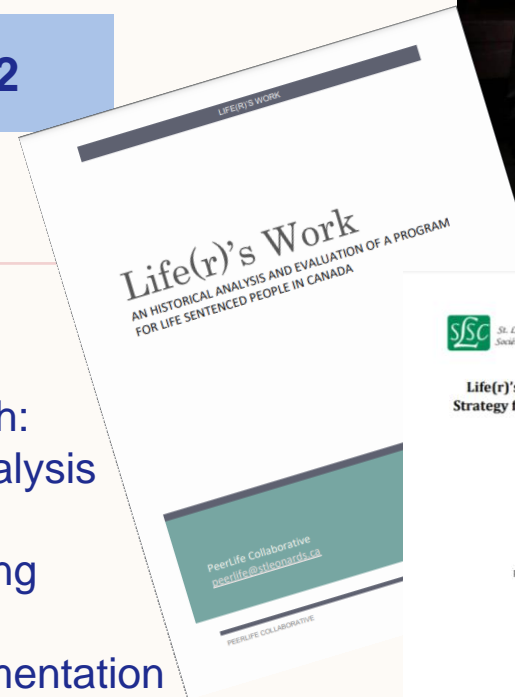
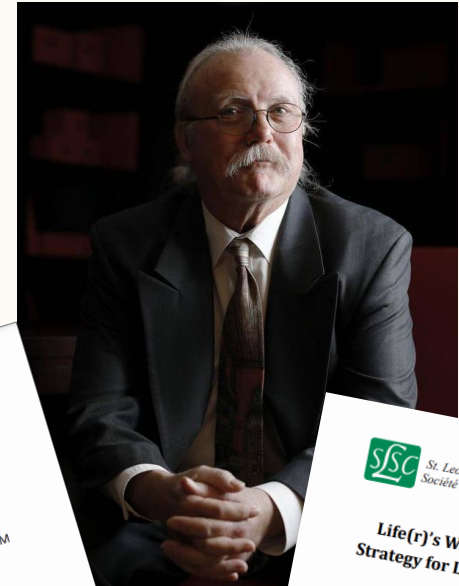
2017-2022

- DRAP: LifeLine funding cut

- Foundation of the PeerLife Collaborative



- Funded research:
- Historical analysis
  - Revise LRS
  - Revise training curriculum
  - Begin implementation
- Financial investment from CSC in Ontario





Elizabeth White, former Executive Director of SLSC.

Excerpted from, *Is there still a place for corrections in the community?* Bolton Symposium. (Nov. 5, 1997)

“If we can, as a society, address individual needs and concerns in an ongoing way and cooperate among our disparate branches of service; if we can avoid the stigmatizing labels which isolate whole groups of people – then there will be not only a future for corrections in our communities, there will be a future for our communities that is positive for us all.

**Community corrections has a place in our culture as a significant, but not isolated part of our social justice response to crime”**

**- Elizabeth White**

# THANK YOU

Danielle Kouri

[danielle@stleonards.ca](mailto:danielle@stleonards.ca)

[www.stleonards.ca](http://www.stleonards.ca)

Instagram: StLeonardsCanada

Facebook: StLeonardsCanada